

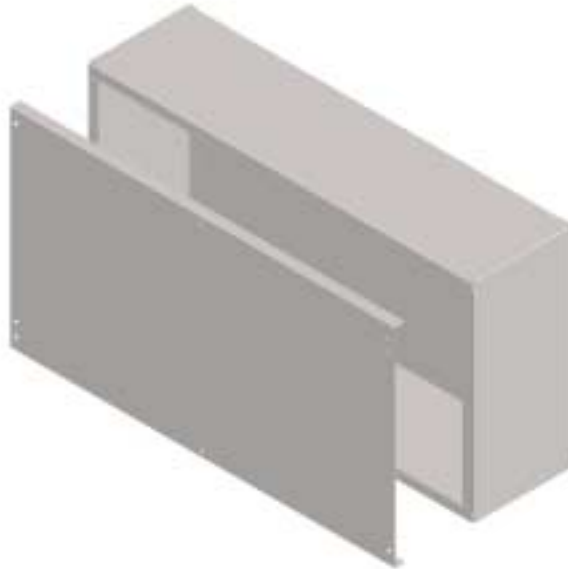


# CURRENT TRANSFORMER CABINETS TYPE 1

## FEATURES AND BENEFITS

- EEMAC/CEMA Type 1 Enclosure (General Purpose)
- Formed screw-on cover (sealable)
- 14 ga. galvanized steel backpan
- 14 ga. galvanized steel construction
- Non-painted finish

Model #	Single Phase Service	Three Phase Service	Description
CT 165308-STL	up to 600A	up to 400A & Below 300V	16 1/2"H x 30"W x 8"D
CT 184216-STL	625A and above	425A & Above and Above 300V	18"H x 42"W x 16"D
CT 184295-STL	625A and above	425A & Above and Above 300V	18"H x 42"W x 9 1/2"D
CT 302010-STL	up to 600A	up to 400A & Below 300V	30"H x 20"W x 10"D
CT 364224-STL	up to 600A	up to 400A & Below 300V	36"H x 42"W x 24"D



## ALUMINUM CURRENT TRANSFORMER CABINETS

- same as above except aluminum construction

Model #	Single Phase Service	Three Phase Service	Description
CT 165308-AL	up to 600A	up to 400A & Below 300V	16 1/2"H x 30"W x 8"D
CT 184216-AL	625A and above	425A & Above and Above 300V	18"H x 42"W x 16"D
CT 302010-AL	up to 600A	up to 400A & Below 300V	30"H x 20"W x 10"D
CT 364224-AL	up to 600A	up to 400A & Below 300V	36"H x 42"W x 24"D