

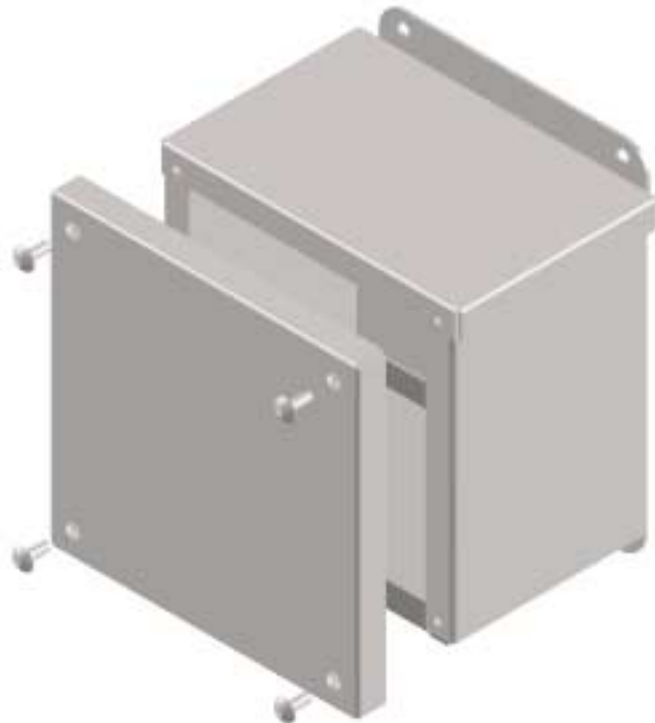


# WEATHERPROOF ENCLOSURE TYPE 3R

## FEATURES AND BENEFITS

- EEMAC/CEMA Type 3R Enclosure (Weatherproof)
- Gasketed lift-off cover
- No backpan
- Wall-mounting ears top and bottom
- Galvanized steel construction
- Industry standard ASA-61 grey industrial powder coat finish
- Also available in stainless steel (consult factory)
- Custom sizes available (consult factory)

Model #	Description
WP 664	6"H x 6"W x 4"D
WP 884	8"H x 8"W x 4"D
WP 886	8"H x 8"W x 6"D
WP 10104	10"H x 10"W x 4"D
WP 10106	10"H x 10"W x 6"D
WP 12124	12"H x 12"W x 4"D
WP 12126	12"H x 12"W x 6"D
WP 16166	16"H x 16"W x 6"D
WP 18186	18"H x 18"W x 6"D
WP 24246	24"H x 24"W x 6"D



## ALUMINUM WEATHERPROOF ENCLOSURES

- Same as above except aluminum construction and non-painted finish

Model #	Description
WPA 664	6"H x 6"W x 4"D
WPA 884	8"H x 8"W x 4"D
WPA 886	8"H x 8"W x 6"D
WPA 10104	10"H x 10"W x 4"D
WPA 10106	10"H x 10"W x 6"D
WPA 12124	12"H x 12"W x 4"D
WPA 12126	12"H x 12"W x 6"D